

YES! WE HAVE HOUSING.



Study here...



NORTH SEATTLE COLLEGE



SEATTLE CENTRAL COLLEGE



SOUTH SEATTLE COLLEGE

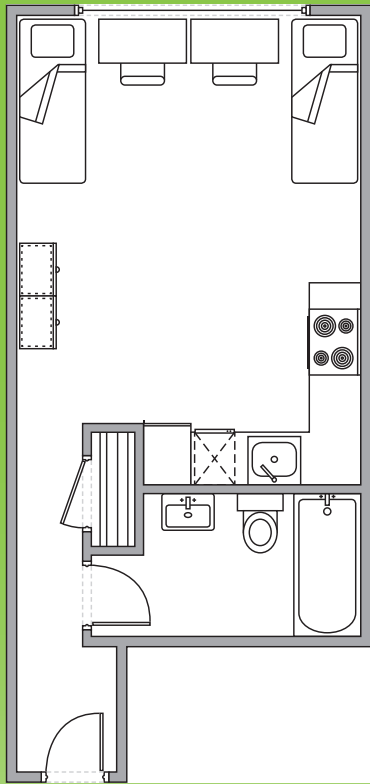


... Live here.

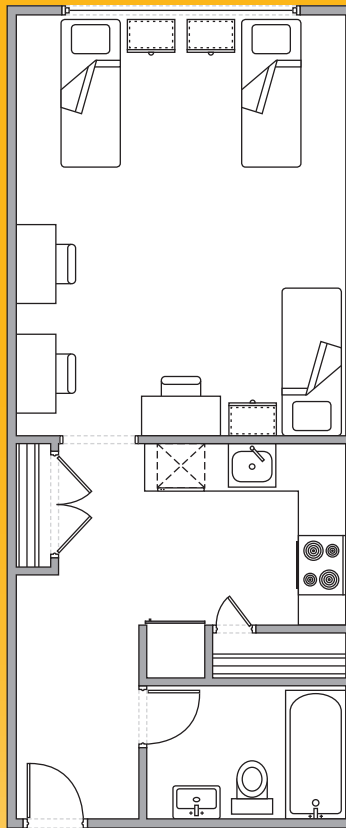
Our international student housing is on the Seattle Central campus, right across the street from Central's main building, a 15-minute subway ride from North, or a 45-minute bus ride from South.

The Studios on Broadway offers 28 furnished apartments in three different floor plans and can accommodate 79 residents. Averaging around \$1,500/month, the studios are surrounded by shops, coffee houses, grocery stores, restaurants, and movie theaters on Capitol Hill, one of Seattle's most vibrant neighborhoods.

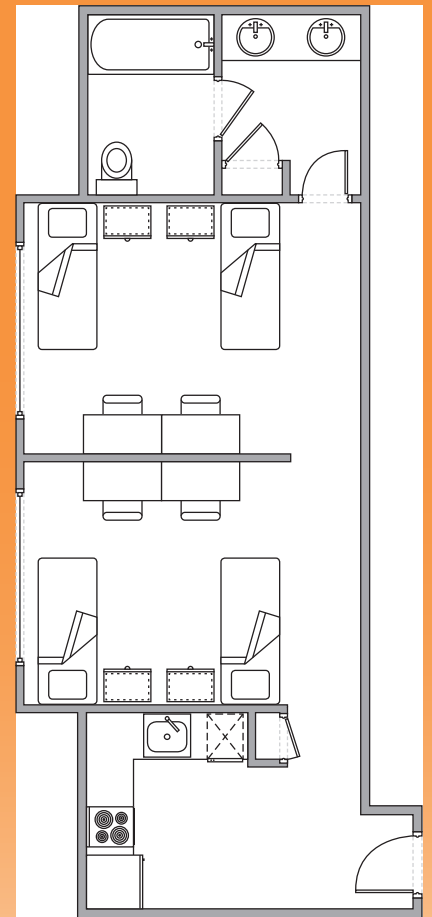
THREE STUDIO FLOOR PLANS



2 PERSON



3 PERSON



4 PERSON

HOW MUCH DOES IT COST AND WHAT'S INCLUDED?

Pricing at the Studios depends on unit type (2-, 3-, or 4-person room) and how long you stay (license period). Housing fees include utilities (electricity, water, garbage, wireless internet). Each unit has a full kitchen equipped with refrigerator, stove, and microwave. Pots, pans, plates, cups, and utensils are not included. Units are furnished with a bed, mattress, dresser, desk, and chair for each resident, and a linens package that includes a comforter, bed sheets, a pillow, towels (bath towel, hand towel, washcloth), and laundry basket upon check-in. Shared storage is also available.

For more information about license periods and housing fees, visit our website at: intl.seattlecolleges.edu/on-campus-housing

Building includes:

- laundry rooms
- secure access
- on-site maintenance
- wireless internet
- optional parking (for additional fee)



To apply, go to: intl.seattlecolleges.edu/request/campus-housing
or click on the QR code.

